

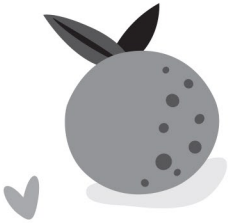
AGE 8+



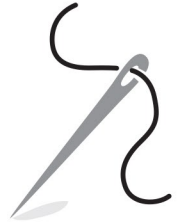
Oziella



MAKE YOUR OWN

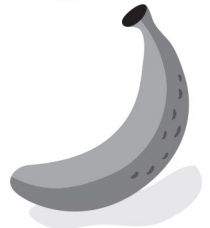


FELT



FRUIT KIT

INSTRUCTIONS



Contains everything you need
to make your own hand stitched felt
Pear, Banana and Orange.



WARNING!

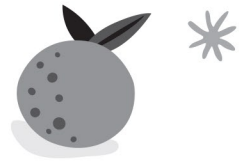
Contains functional sharp point
sewing needle.
Use under direct adult supervision.



WARNING!
CHOKING HAZARD - Small parts.
Not for children under 3 years.
Materials: Polyester and Cotton
PA-19183 (CN)



HOW TO MAKE YOUR ORANGE

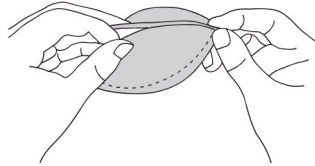


STEP 1

Prepare all the material: 6 orange sides, green and white stalk pieces, body thread and decorative orange thread, stuffing.

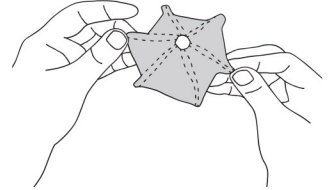
STEP 2

There are 6 sides for the orange, sew them together leaving a 4cm opening on one side.



STEP 3

After sewing the 6 sides there will a little hole on the top and bottom. Sew up the holes.



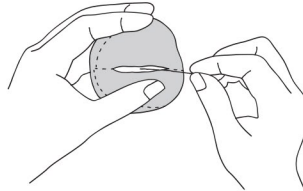
STEP 4

Turn inside out to be finished side facing out.

Then pack tightly with the stuffing.

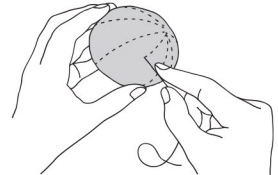
STEP 5

Sew up the opening.



STEP 6

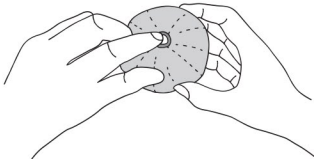
Sew decorative thread on the orange running from the top down to the middle of the segments.



STEP 7

Sew or glue the white dot on the green base.

Sew or glue the green base on the top the orange.



THE ORANGE IS DONE!





HOW TO MAKE YOUR BANANA

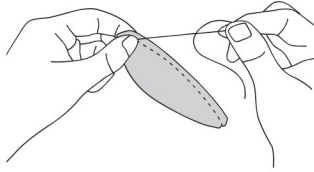


STEP 1

Prepare all the material: Banana body pieces: 2 sides and 1 front (smaller) and back (larger) piece, brown and yellow stalk pieces, stuffing.

STEP 2

Sew 1st side (longest edge) and back piece together along one side.



STEP 3

Sew 2nd side (longest edge) and back piece together along the other side.

STEP 4

Sew the front piece of banana on 1st side (shorter edge).

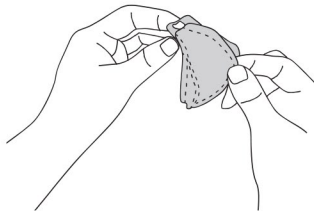
STEP 5

Sew the front piece of banana on 2nd side (shorter edge) leaving a 4cm opening.

STEP 6

Turn the stitched banana body inside out to be finished side facing out.

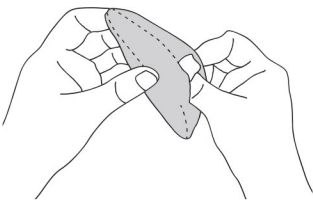
Pack tightly with the stuffing.



STEP 7

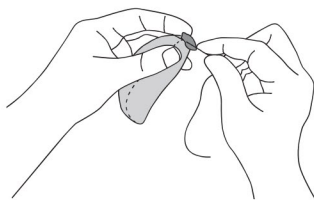
Sew up the opening.

Sew or glue the yellow stalk piece on the brown stalk piece.



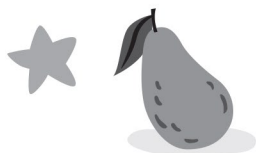
STEP 8

Sew or glue the stalk piece to the base of the banana.



THE BANANA IS DONE!





HOW TO MAKE YOUR PEAR

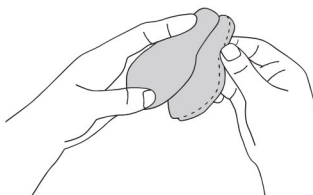


STEP 1

Prepare all the material: 6 pear sides, brown stalk and green leaf, thread, stuffing.

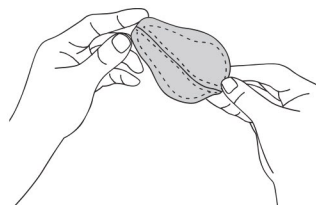
STEP 2

There are 6 sides for the pear, sew them together leaving a 4cm opening on one side.



STEP 3

After sewing the 6 sides, there will be a little hole on the top and bottom. Sew up the holes.



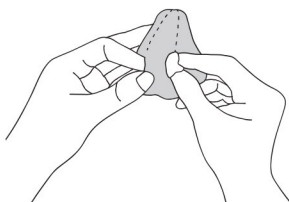
STEP 4

Turn the stitched pear body inside out to be finished side facing out.

STEP 5

Pack tightly with the stuffing.

Sew up the opening.

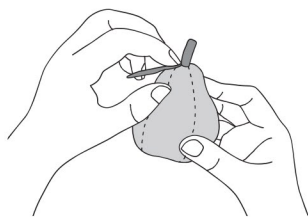


STEP 6

The light brown felt is the stalk of the pear, roll up and sew or glue on the top of the pear.

STEP 7

Sew or glue the leaf on at the bottom of the stalk.



THE PEAR IS DONE!

